



Coastal Lifestyle

COLLECTION




Coastal Lifestyle
COLLECTION



My Hero



My Perfect Day

My Coastal home...

is a reflection of my style,

an extension of my dreams, and

a frame for the portrait of my life.



My Neighborhood... My Home





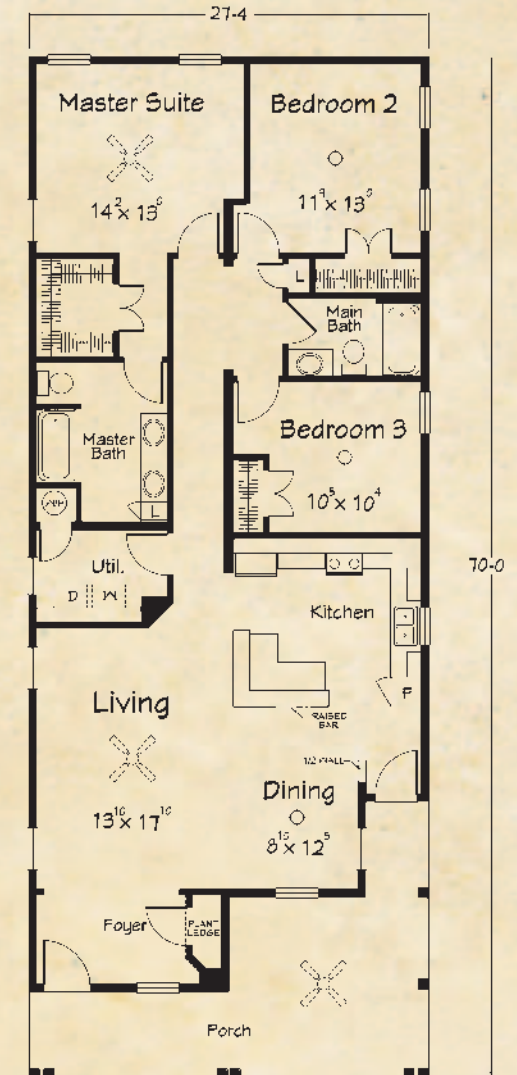
the Arabella Ranch

This charming cottage offers an open plan design that is gracious as well as spacious. The unique, front porch "seating square" is like having an additional outdoor room and is the perfect spot for visiting with family, friends and neighbors.

Arabella Ranch Plan B

1634 sq. ft. Living
278 sq. ft. Porch

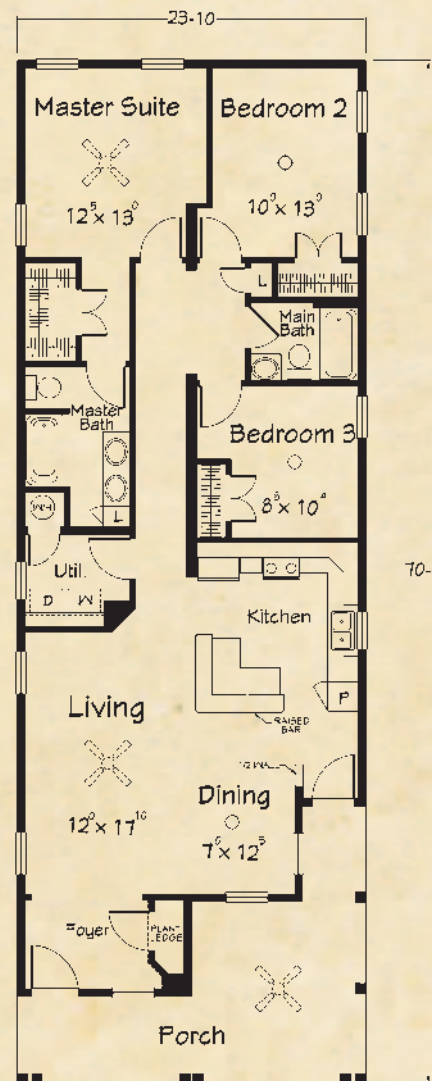
1912 Total



Arabella Ranch Plan A

1421 sq. ft. Living
246 sq. ft. Porch

1667 Total



Artist renderings depict homes as they may be built on a typical site. Renderings may include optional or site installed features. Refer to "Coastal Collection" standard specifications and be sure to thoroughly discuss all aspects of your Building project with your homebuilder.





the Acadian Ranch

Classic lines and balance make the Acadian style home a timeless family favorite. The charming front porch greets all who approach your door. The elegant foyer with its classic window seat and entry columns will welcome you home.

Acadian Ranch Plan A

1457 sq. ft. Living
114 sq. ft. Porch

1571 Total



Acadian Ranch Plan B

1621 sq. ft. Living
114 sq. ft. Porch

1735 Total

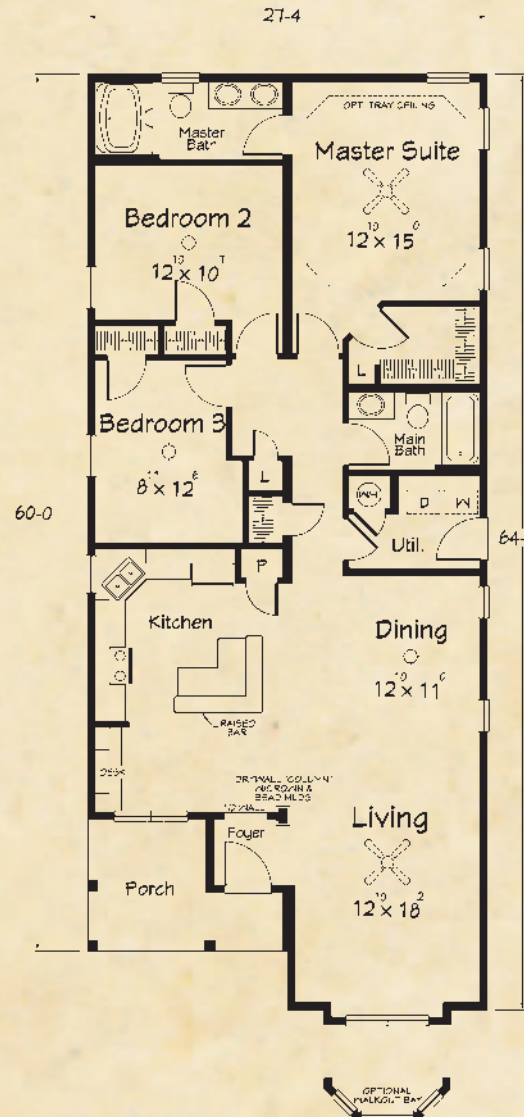




Bayview Cottage Plan A

1609 sq. ft. Living
94 sq. ft. Porch

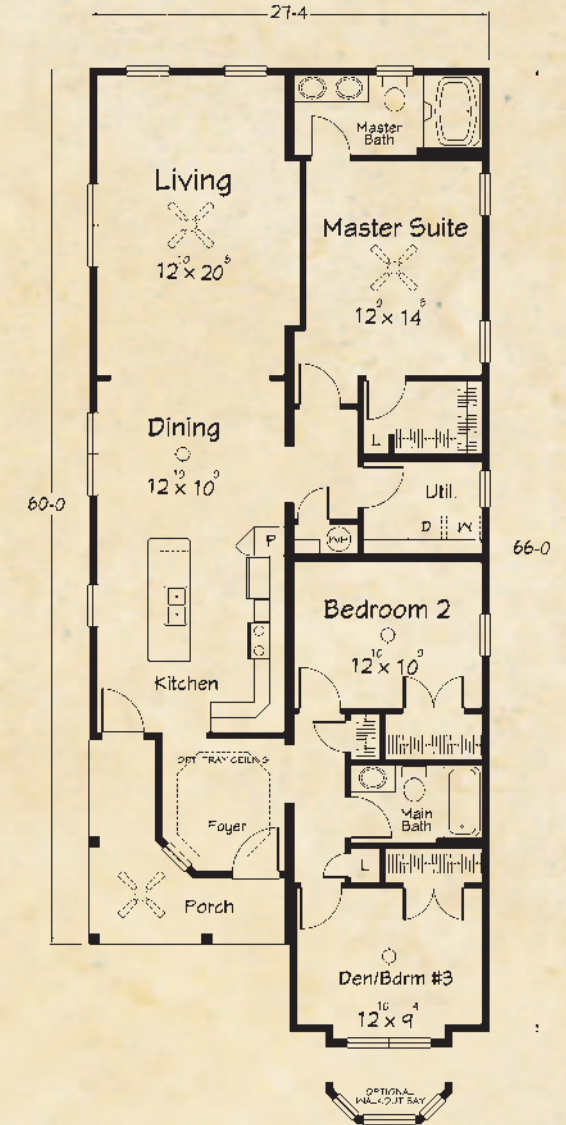
1703 Total



Bayview Cottage Plan B

1624 sq. ft. Living
106 sq. ft. Porch

1730 Total



the Bayview Cottage

The traditional "shotgun" design meets the modern family's lifestyle. Large, combination-rooms provide connected open spaces for plenty of "together time" while the elegant master suite offers a welcome retreat.

Artist renderings depict homes as they may be built on a typical site. Renderings may include optional or site installed features. Refer to "Coastal Collection" standard specifications and be sure to thoroughly discuss all aspects of your building project with your homebuilder.



the Bonita Bungalow

The Bonita's unique three-tiered, front gable provides a special "ginger bread house" appeal with lots of opportunity for exterior design "expression". The covered front entry and "sitting" porch lead to an elegant foyer and grand entryway. An open and inviting central living area make this a great plan for relaxation and entertaining.

Bonita Bungalow Plan B

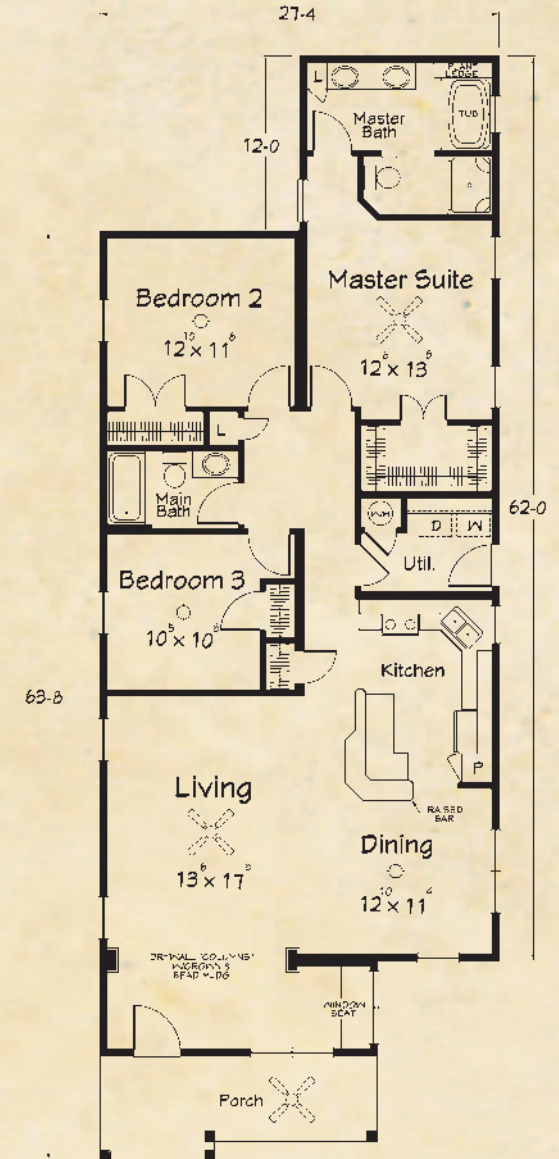
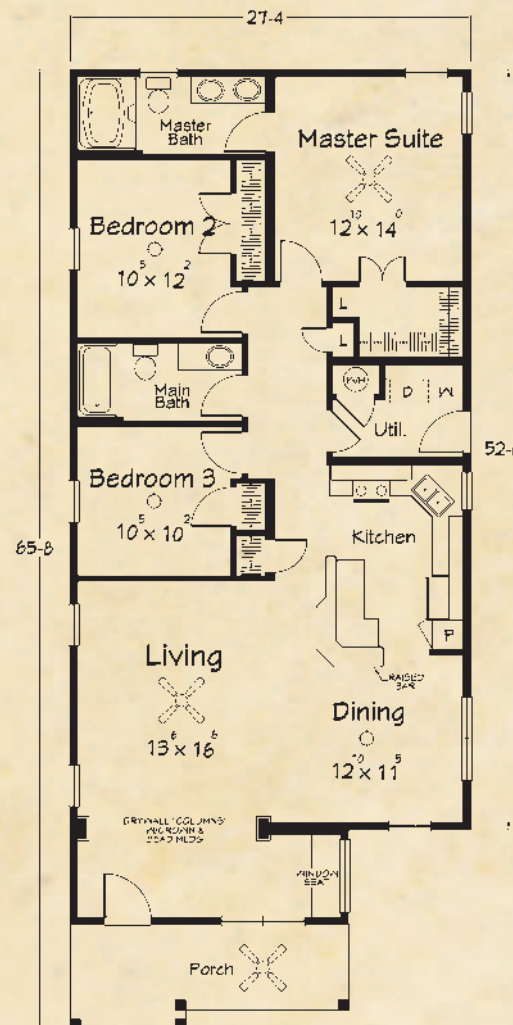
1653 sq. ft. Living
121 sq. ft. Porch

1774 Total

Bonita Bungalow Plan A

1544 sq. ft. Living
121 sq. ft. Porch

1665 Total





Plan B shown.

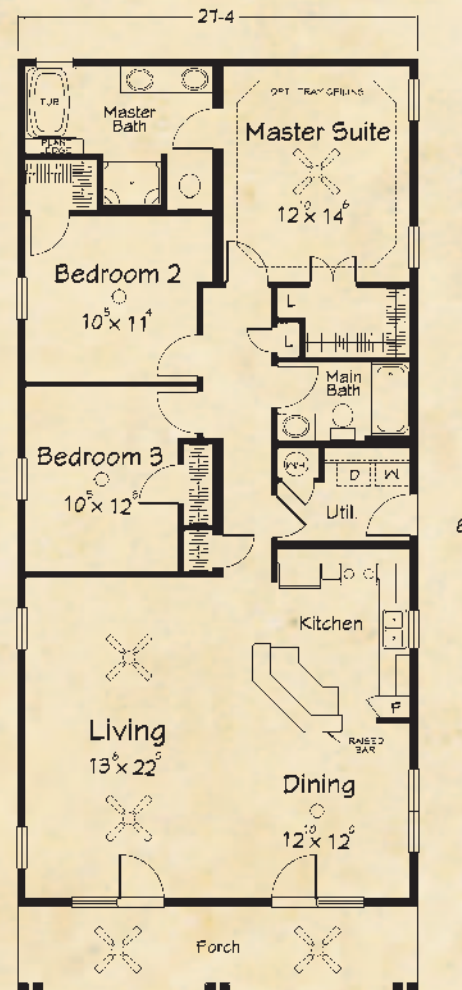
the Dauphin Island Cottage

The classic “get away” style home that you’ll want to live in every day. This classy hip-roof ranch features an inviting, full width front porch with paired columns. Elegant double entry doors lead to a wide-open interior plan with plenty of family/entertainment space. Large bedrooms with plenty of closet space round out these great floor plans.

Dauphin Island Cottage Plan A

1585 sq. ft. Living
164 sq. ft. Porch

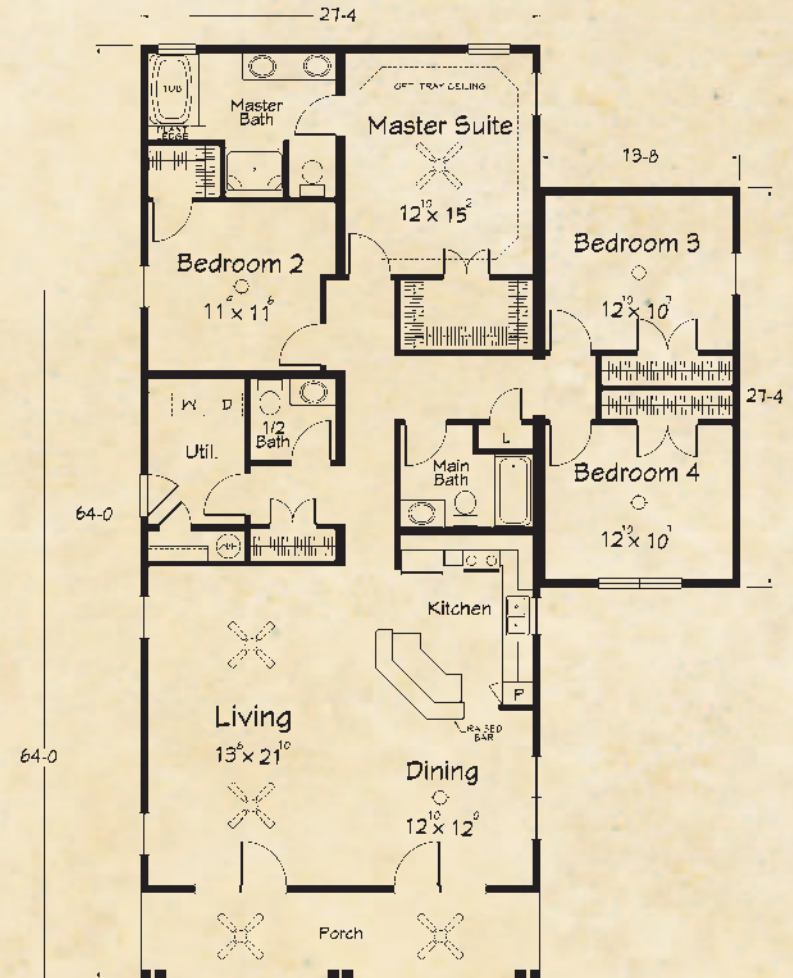
1749 Total



Dauphin Island Cottage Plan B

1958 sq. ft. Living
164 sq. ft. Porch

2122 Total



Artist renderings depict homes as they may be built on a typical site. Renderings may include optional or site installed features. Refer to “Coastal Collection” standard specifications and be sure to thoroughly discuss all aspects of your building project with your homebuilder.

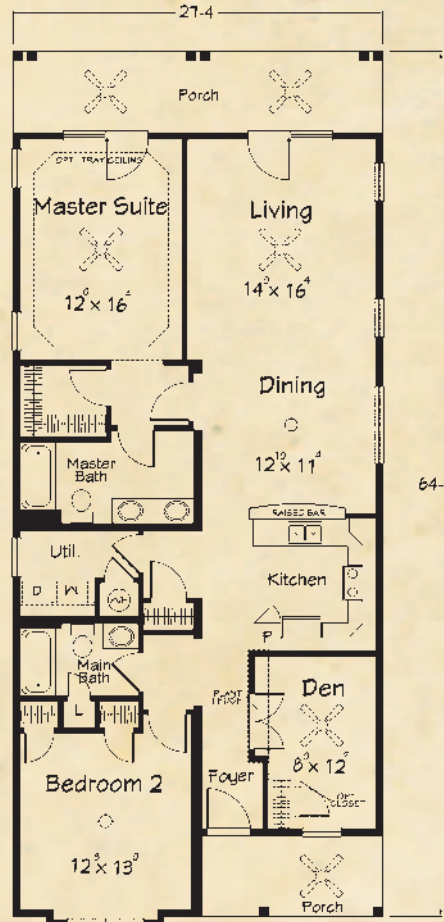


Back Porch View

**Daybreak Cottage
Plan A**

1509 sq. ft. Living
246 sq. ft. Porch

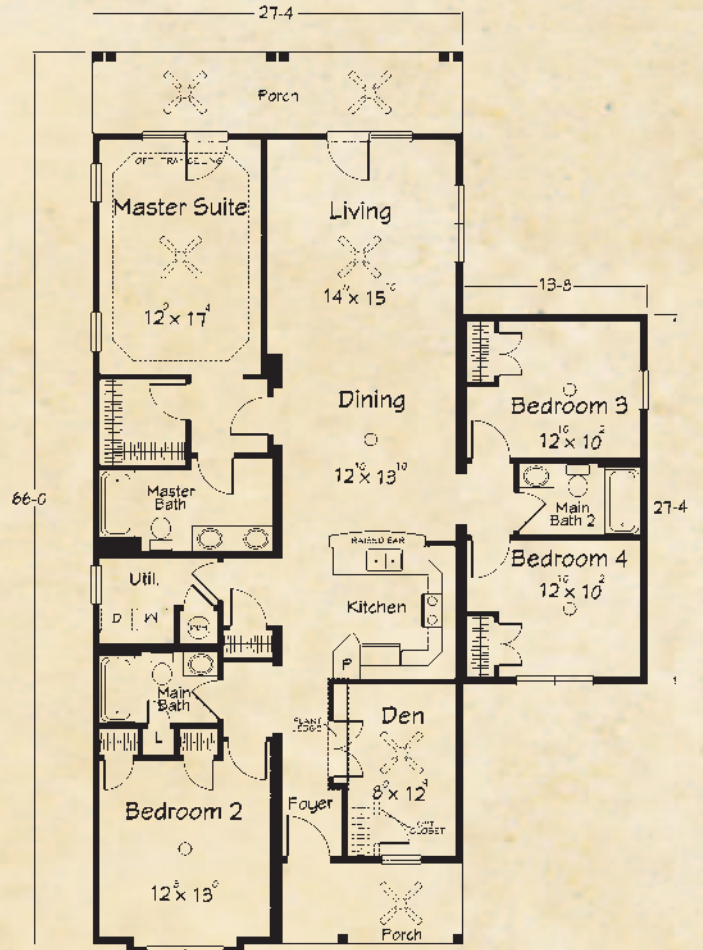
1755 Total



**Daybreak Cottage
Plan B**

1309 sq. ft. Living
246 sq. ft. Porch

1755 Total



Plan A shown.

the **Daybreak Cottage**

This unique design provides front entry from the street side and a large full width back porch on the rear, "view side" of the home. The interior plan also allows for great, rear facing views from the main living areas and from the master bedroom. The design of the Daybreak Cottage will allow you to take full advantage of the views from your special home site.



the Coastal Cottage

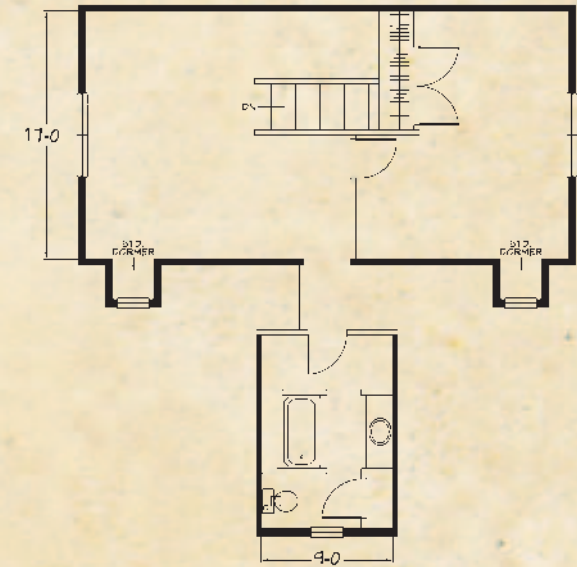
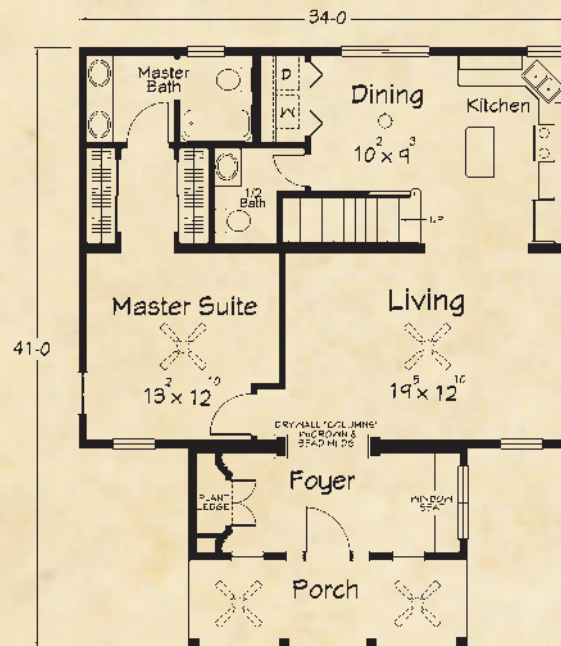
This “little house that could”...just may be the perfect house for you. This plan can be an affordable starter house or an elegant “empty nester” home. The charming style is an example of classy understatement that will acknowledge your good taste and serve as a reminder that—good things really do come in small packages.

Coastal Cottage Main Level

1074 sq. ft. Living
114 sq. ft. Porch

1188 Total

*Plus 662 sq. ft.
available at upper level



Coastal Cottage Upper Level

**Please note that the upper level area is designed for economical completion on-site. Refer to Ritz-Craft's Coastal Lifestyle specifications for included materials and discuss all aspects of completion with your homebuilder.*

Artist renderings depict homes as they may be built on a typical site. Renderings may include optional or site installed features. Refer to “Coastal Collection” standard specifications and be sure to thoroughly discuss all aspects of your building project with your homebuilder.



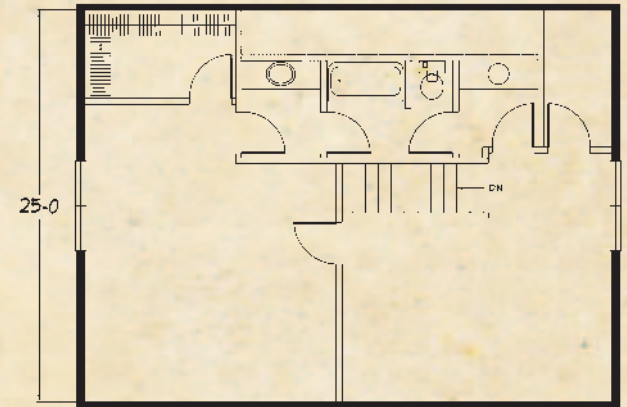


Cute Cottage Main Level

1294 sq. ft. Living
120 sq. ft. Porch

1414 Total

*Plus 809 sq. ft.
available at upper level

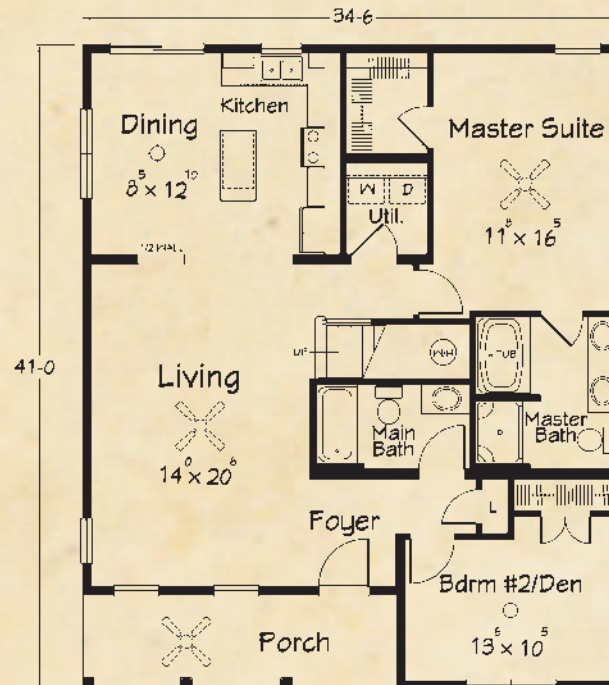


Cute Cottage Upper Level

**Please note that the upper level area is designed for economical completion on-site. Refer to Ritz-Craft's Coastal Lifestyle specifications for included materials and discuss all aspects of completion with your homebuilder.*

the Cute Cottage

The name says it all and "cute works". This open floor plan home can provide plenty of family living space or start out small and expand later. The Cute Cottage combines exterior curb appeal and interior livability within a "small footprint" design.



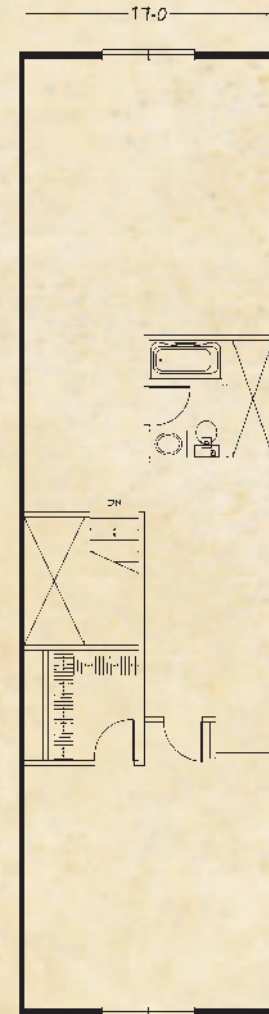
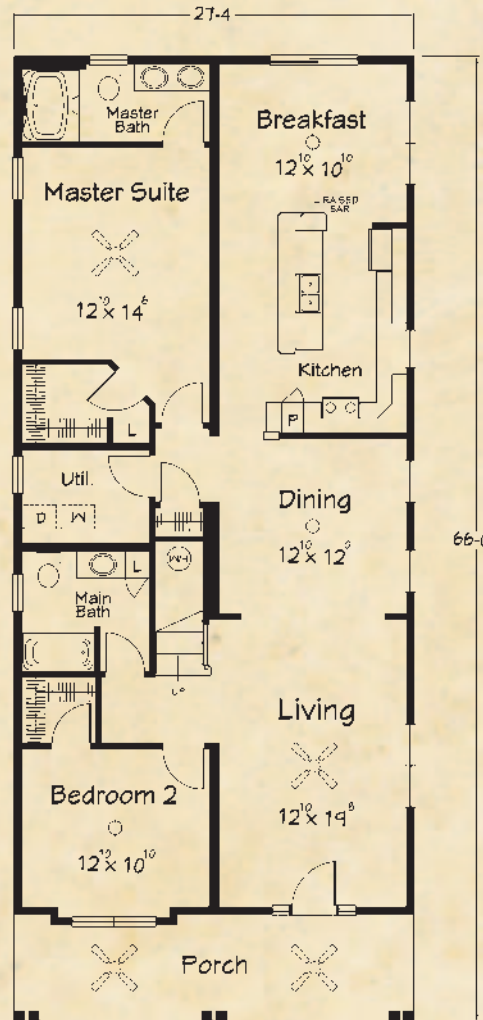


Belle Chasse Cottage Main Level

1610 sq. ft. Living
194 sq. ft. Porch

1804 Total

*Plus 1122 sq. ft.
available at upper level



Belle Chasse Cottage Upper Level

*Please note that the upper level area is designed for economical completion on-site. Refer to Ritz-Craft's Coastal Lifestyle specifications for included materials and discuss all aspects of completion with your homebuilder.

the Belle Chasse Cottage

This "village-style" cottage house is at home in town or in the country. The gracious full width front porch and elegant entry door leads to a surprisingly large and open interior. The huge "cook's kitchen" opens to the rear facing dining nook and patio door. Completion of the upper level adds one or two additional bedrooms—or perhaps, that home theatre you've always wanted.

Artist renderings depict homes as they may be built on a typical site. Renderings may include optional or site installed features. Refer to "Coastal Collection" standard specifications and be sure to thoroughly discuss all aspects of your building project with your homebuilder.



Shown with Shed Dormer

the Craftsman Cape

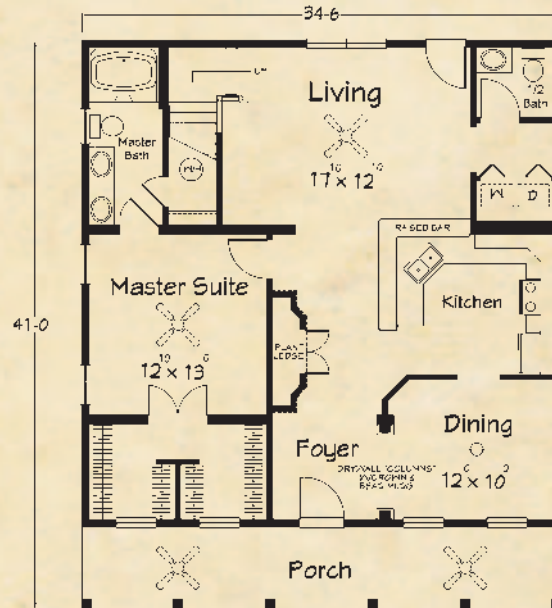
The elegant, full width front porch and balanced front windows give this "craftsman" inspired cottage a classic curb appeal. The large, centered front dormer includes a charming triple window and is available with a shed roof or gabled roof. An open interior plan offers plenty of "gathering space" and the large first floor master suite can be your own spacious retreat. The upper level provides generous bonus space and flexible design opportunities.

Craftsman Cape First Floor A

1210 sq. ft. Living
207 sq. ft. Porch

1417 Total

*Plus 853 sq. ft.
available at upper level

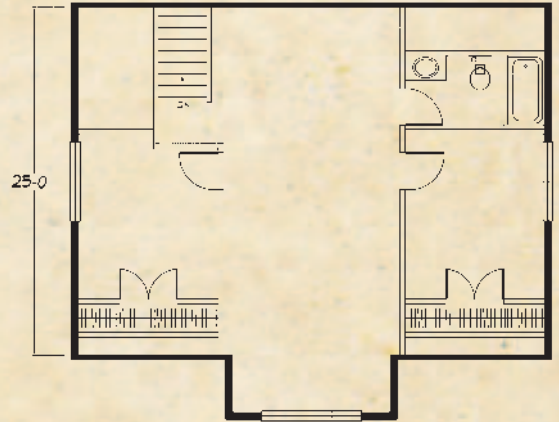


Craftsman Cape First Floor B

1210 sq. ft. Living
207 sq. ft. Porch

1417 Total

*Plus 853 sq. ft.
available at upper level



Craftsman Cape Second Floor Plans A & B

*Please note that the upper level area is designed for economical completion on-site. Refer to Ritz-Craft's Coastal Lifestyle specifications for included materials and discuss all aspects of completion with your homebuilder.

*A gabled "A-style" dormer is available for this model.
Ask your Ritz-Craft builder for information.



the Chandeleur Cape

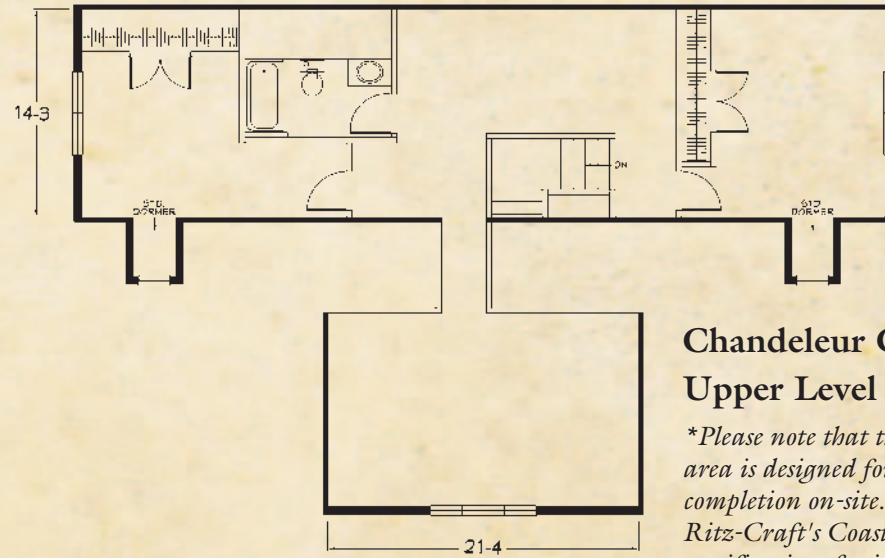
This large family home's proud exterior blends Acadian and Craftsman elements for a unique transitional style all its own. The grand front porch leads to an elegant entry foyer with broad views of the open plan. The plan includes a special "hearth kitchen" and the adjacent morning room includes a huge built-in desk area. The center-hall stairwell location provides a "harmony and flow" between the first and second floor living areas.

Chandeleur Cape Main Level

1790 sq. ft. Living
204 sq. ft. Porch

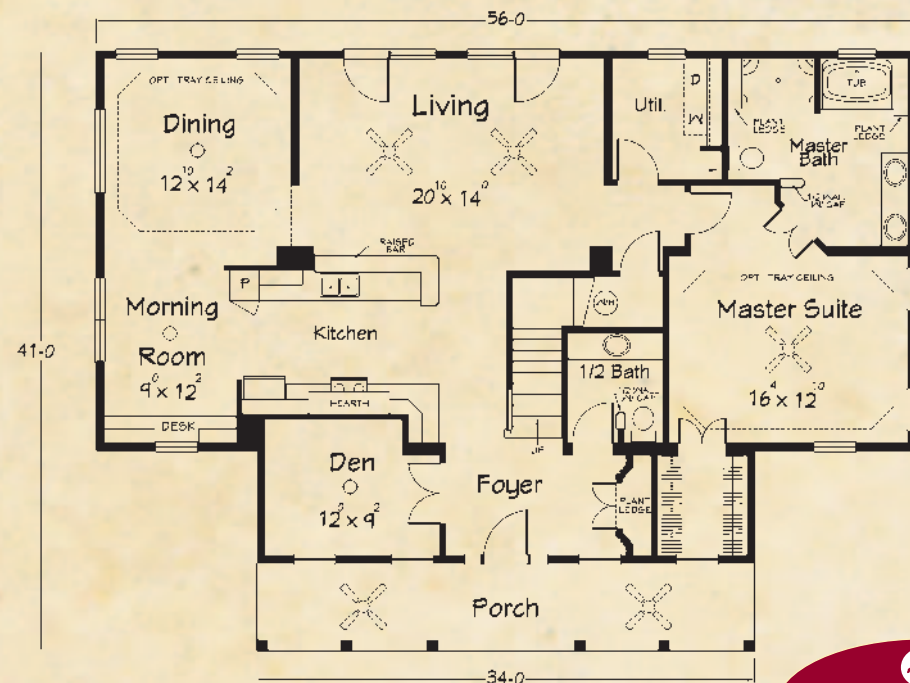
1994 Total

*Plus 1087 sq. ft.
available at upper level



Chandeleur Cape Upper Level

**Please note that the upper level area is designed for economical completion on-site. Refer to Ritz-Craft's Coastal Lifestyle specifications for included materials and discuss all aspects of completion with your homebuilder.*



Artist renderings depict homes as they may be built on a typical site. Renderings may include optional or site installed features. Refer to "Coastal Collection" standard specifications and be sure to thoroughly discuss all aspects of your building project with your homebuilder.

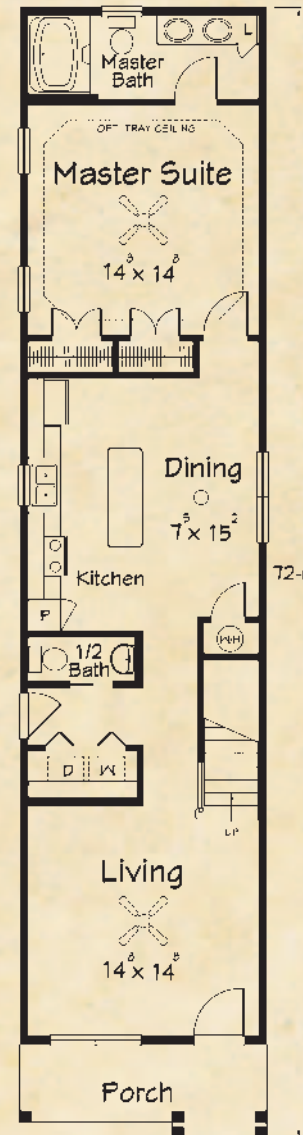
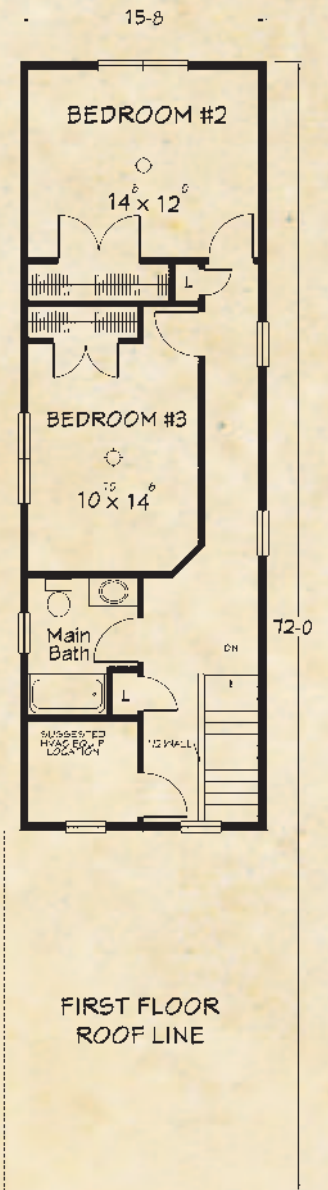


Camelot Two Story Second Floor

Camelot Two Story First Floor

1034 sq. ft. 1st Floor Living
767 sq. ft. 2nd Floor Living
84 sq. ft. Porch

1885 Total



the Camelot Two Story

The classic "camel-back" style home has long been considered the gold standard for form and function in a compact and efficient plan. A double gable front porch provides entry to this classic shotgun style floor plan which features a big kitchen with pantry and island cabinetry and a stately, first floor master's suite complete with his and hers closets.



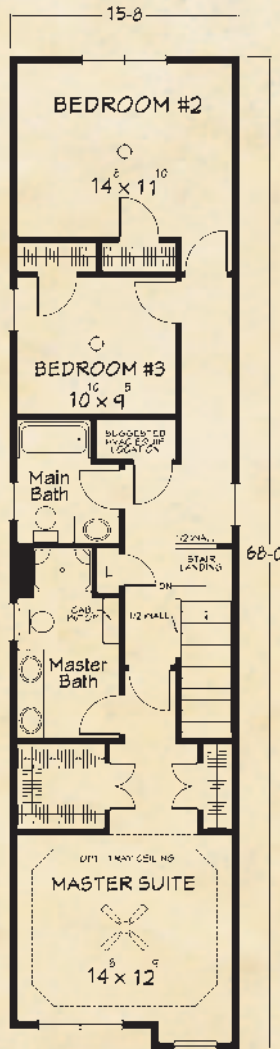
**Garden City
Two Story
First Floor A**

1002 sq. ft. 1st Floor Living
1050 sq. ft. 2nd Floor Living
94 sq. ft. Porch

2146 Total



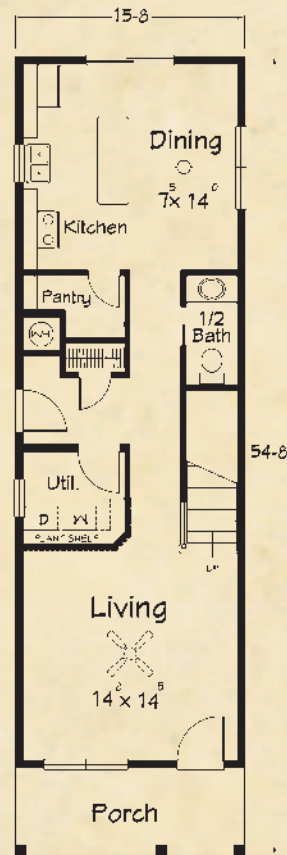
**Garden City
Two Story
Second Floor A**



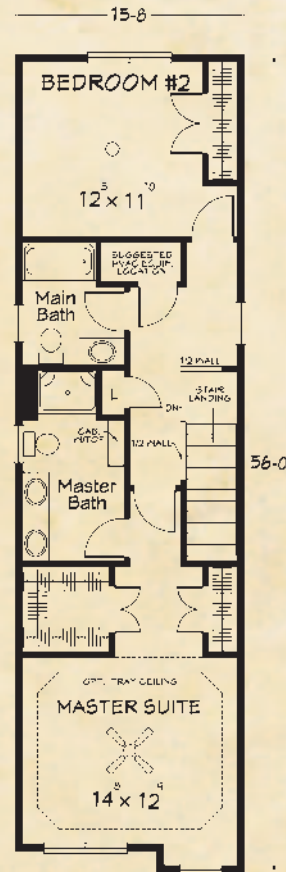
**Garden City
Two Story
First Floor B**

762 sq. ft. 1st Floor Living
862 sq. ft. 2nd Floor Living
94 sq. ft. Porch

1718 Total



**Garden City
Two Story
Second Floor B**



the **Garden City Two Story**

The charming, narrow lot friendly, Garden City plans provide large house square footage in a small frontage design. Stylishly appointed, both inside and out, these two story plans can make the most of your home site. Choose either plan and you'll enjoy a large workable kitchen with a walk-in pantry and a private master's suite with a large bath and his and hers closets.

Artist renderings depict homes as they may be built on a typical site. Renderings may include optional or site installed features. Refer to "Coastal Collection" standard specifications and be sure to thoroughly discuss all aspects of your building project with your homebuilder.

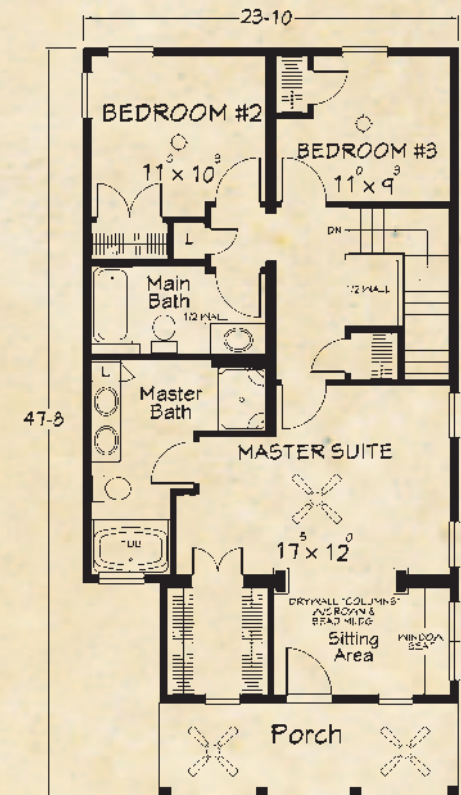




the Gravier Two Story

This New Orleans style jewel is the elegant answer for a smaller, upscale home site. The classic gable roofed, porch-over-porch at the front of the home provides a beckoning entry for the first floor and a grand, private veranda extending from the second floor master suite. Upscale interior features including built-in window seats and entry foyer columns compliment the home's comfortable floor plan.

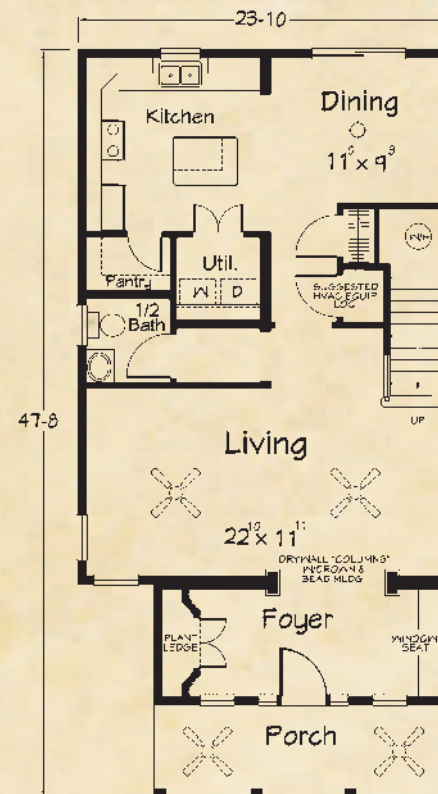
Gravier Two Story Second Floor



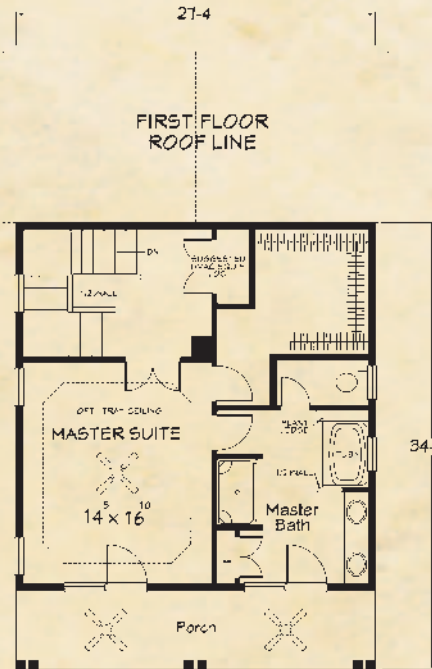
Gravier Two Story First Floor

956 sq. ft. 1st Floor Living
956 sq. ft. 2nd Floor Living
228 sq. ft. Porch

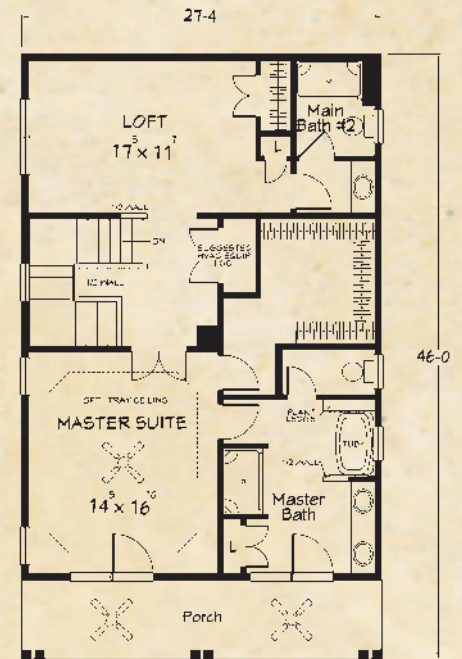
2140 Total



**Bayou Breeze Two Story
Second Floor
Plan A**



**Bayou Breeze Two Story
Second Floor
Plan B**



**Bayou Breeze Two Story
Plan A**

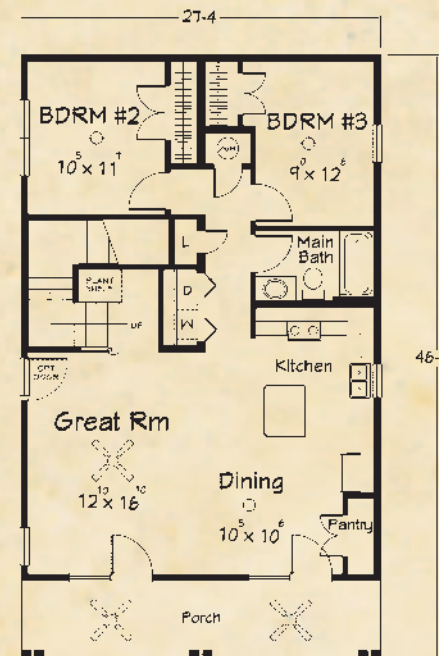
1857 sq. ft. Living
328 sq. ft. Porch

2185 Total

**Bayou Breeze Two Story
Plan B**

2185 sq. ft. Living
328 sq. ft. Porch

2513 Total



the **Bayou Breeze
Two Story**

The "Breeze" is everybody's favorite two story water view house. The double stacked porches let you drink in the fresh air and that special view. Step out onto the porches from the wide open Great Room or greet the day as you step out from your beautiful master suite.

Artist renderings depict homes as they may be built on a typical site. Renderings may include optional or site installed features. Refer to "Coastal Collection" standard specifications and be sure to thoroughly discuss all aspects of your building project with your homebuilder.



Back Porch View



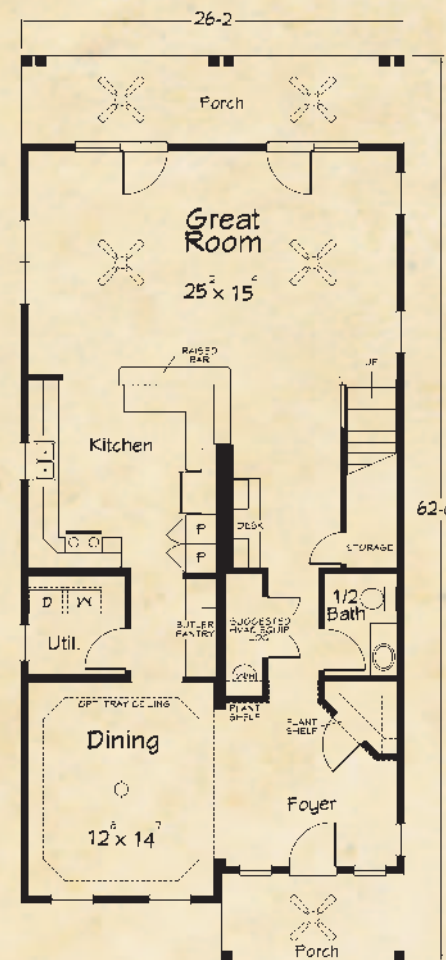
the Buena Vista Two Story

The true beauty of this home grows as it unfolds itself upon your entry. As you pass from the elegant foyer and move toward the impressive, rear facing Great Room, you can then begin to appreciate the spectacular views available from the gathering spaces and broad rear porch. That same view awaits the owners each day as they enjoy their own private, second story porch spanning the full width of the master suite.

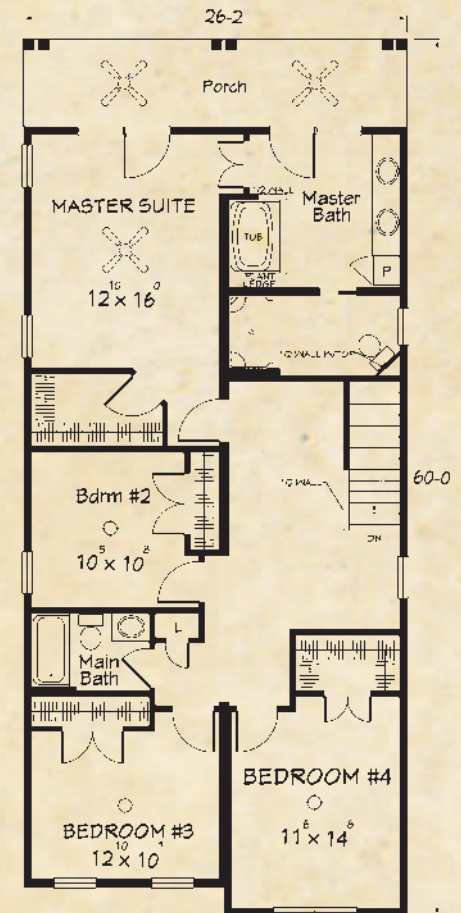
Buena Vista Two Story First Floor

1335 sq. ft. 1st Floor Living
1385 sq. ft. 2nd Floor Living
414 sq. ft. Porch

3134 Total



Buena Vista Two Story Second Floor



About Ritz-Craft

Founded in 1954, and still family owned and operated, Ritz-Craft specializes in “system built homes” that are custom built off site in one of five climate controlled facilities. These components are then transported to the site, installed on the foundation and completed by a local partnering builder.

Ritz-Craft home plans offer wide variety and are designed to embrace each region’s architecture while offering many aesthetically pleasing and functional features. Building your new home with Ritz-Craft’s custom designed modules offers many advantages over conventional “stick by stick” site assembly. Our precision construction methods take place under roof in well lighted, climate controlled and efficient workstations that allow high quality and high efficiency. In fact, our quality assurance process includes code compliance inspections by a state licensed third party agency and over twenty-five key inspection checkpoints monitored by our in-house Quality Assurance Team. Ritz-Craft also utilizes many Green Friendly materials and processes to save energy, recycle materials, and to manage waste in an environmentally responsible manner.

When you choose Ritz-Craft, you’re selecting an experienced company with a commitment to quality and to the future. We have grown from a modest one-plant operation into a thriving enterprise with over one million square feet of climate controlled production space in five modern highly mechanized plants. Some people ask if our homes are built as well as a site built home....

and our proud reply is “yes, --- as well, and in many respects, better.” We say that with confidence knowing our process simply cannot be matched with in-field home building methods.

We’re proud of our custom built single story, cape cod style, and two story homes and we sincerely thank you for considering Ritz-Craft Corporation for your next home.



*Paul D. John, President/CEO
Eric John, Vice President*



Ritz-Craft Family of Companies

Our family of companies also includes Ritz-Trans, Legacy Crafted Cabinets and Legacy Building Products. Ritz-Craft also provides construction to permanent mortgage financing through Ritz-Craft Home Mortgage, LLC.





*Your approved
Ritz-Craft
Home Builder:*

Approved homebuilders are independent business entities and are not agents of Ritz-Craft Corporation.

Due to occasional updating of building codes and Ritz-Craft's continuous product improvement, specifications are subject to change without prior notification.
Be sure to request a copy of current specifications from your selected homebuilder.

